

## DIESEL ENGINE CYLINDER LEAKAGE TEST KIT



### Diesel Engine Cylinder Leakage Test Kits

Three diesel engine cylinder leakage test kits that cover the wide range of modern engines including HDi, TDCi and Pumpe Duse . This kit covers mosy popular cars and vans, it has additional glow plug adaptors for increased coverage and with further includes an adaptor set for clamp-type injectors to give even winder coverage of car,van,truck and bus, agricultural and marine applications.

Glow plug Adaptor: Wide range of Alfa , BMW , Chrysler , Daewoo , Fait , Ford , Hyuidai , Izusu , LandRover , LDV , Mazda , Mercedes , Mitsubishi , Nissan , Opel , PSA , Renault , Saab , Suzuki , Toyota , VAG , Vauxhall , Volvo diesel engines

Injector: M20 , M22 , M24 & Ford Stanadyne injector plus clamp-on injector

## Diesel Engine Cylinder Leakage Adaptor Range

Dummy Glowplug Adaptors-vehicle/engine-Adaptor reference

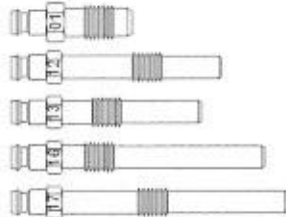
GP Adaptor Sets-models covered by Adaptors in each Set

Test Kits-vehicle models covered by each Leakage Test Kit

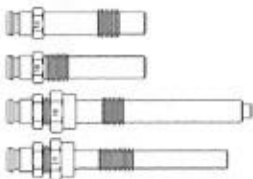
### Adaptor Sets:

There are 6 Adaptor Sets which broadly cover the following applications...

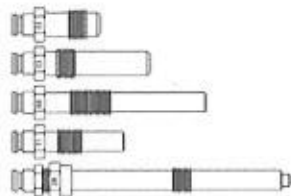
**145-1** Glowplug Adaptor Set (Qty 5)-General, popular coverage including a selection from the Alfa, Mazda, PAS,BMW, Chrysler,Nissan,Fiat,Ford, Mercedes,Mitsubishi,Renault,Rover,Saab,Suzuki, VAG,Vauxhall & Volvo ranges of diesel engines



**145-2** Glowplug Adaptor Set (Qty 4)-Additional coverage of Fiat,Alfa,Ford & PSA engines



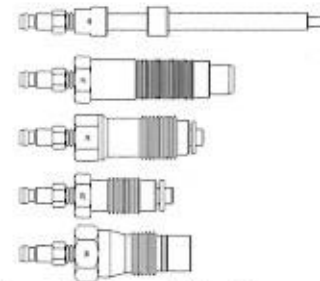
**145-3** Glowplug Adaptor Set (Qty 5)-Additional coverage of LDV,Ford,Hyundai, Mazda,Mitsubishi, Toyota,Suzuki & Ninnan engines



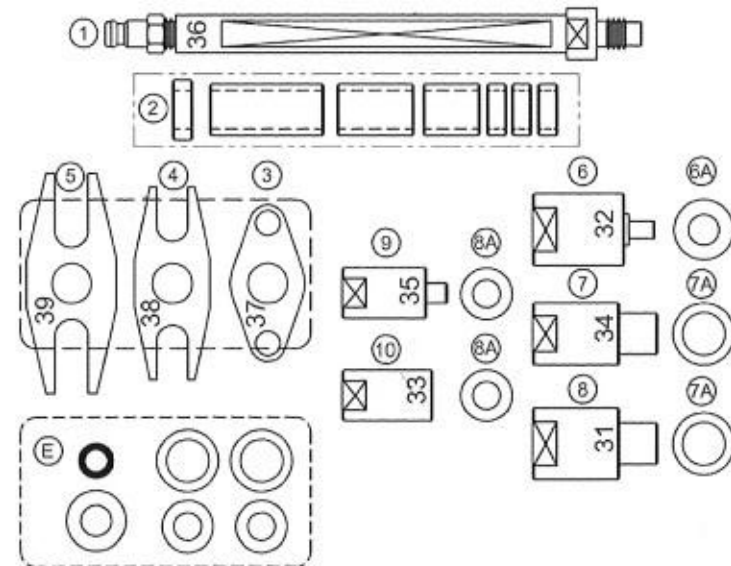
**145-4** Injector Adaptor Set (Qty 6)-Popular applications for preferred injector entry M24,M22 & M20 on Nissan,Ford,PSA, Rover,Mercedes,BMW,Land,VAG, Toyota & Vauxhall engines. Also includes Stanadyne injector for Ford Transit (-00)



**145-5** Glowplug Adaptor Set (Qty 5)-Additional coverage of Isuzu,Mercedes,Renault & Vauxhall engines



**145C** Clamp-on injector Adaptor Set-Covers slide in, clamp or claw held injectors found across all sizes of engine-cars to larger diesels

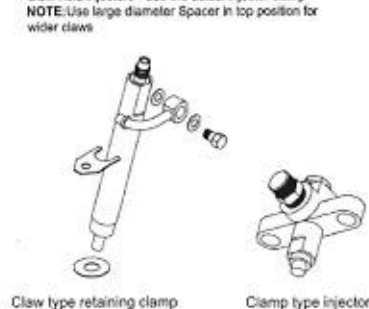
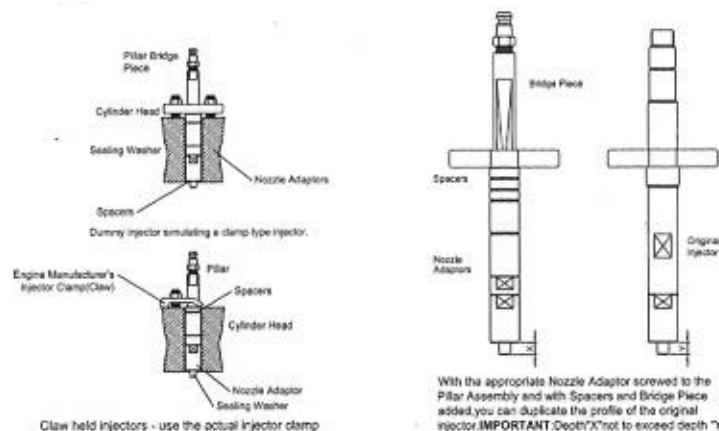
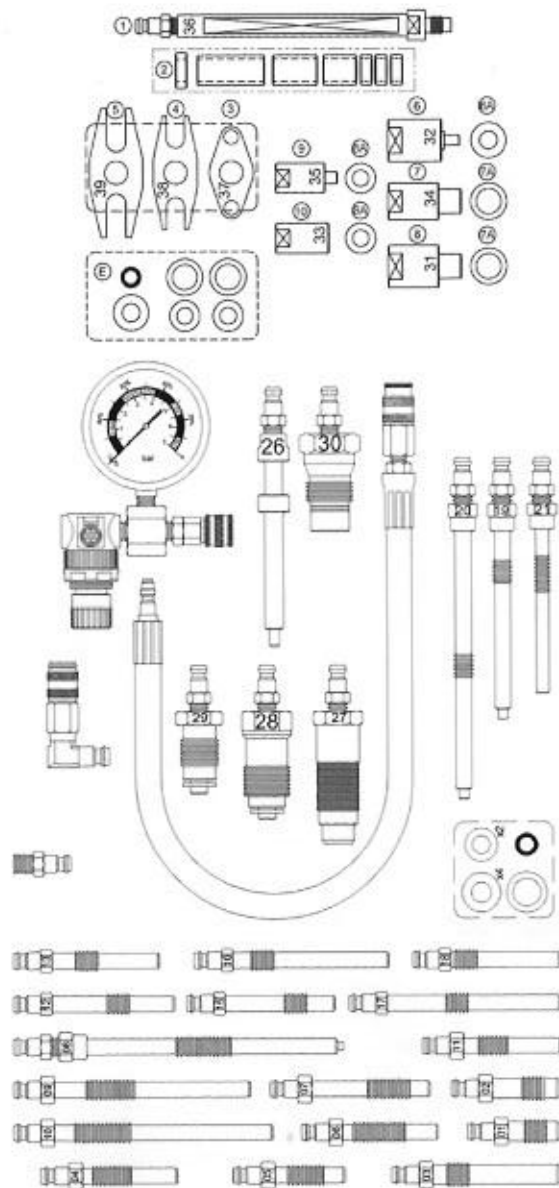


## INTRODUCTION & APPLICATIONS

A modular range of Diesel Engine Cylinder Leakage Test Kits and a comprehensive selection of dummy glowplug and injector adaptors covering the huge range of modern diesels encountered in service workshops today.

These kits offer a choice of initial levels of application coverage and the large range of adaptors then provide the opportunity of selectively increasing the application coverage, as required.

The Dummy Glowplug and injector Adaptors are available in sets or can be purchased individually.



## SAFETY INSTRUCTIONS

- WARNING!** Ensure all Health and Safety, local authority, and general workshop practice regulations are strictly adhered to when using product. Maintain tools in good and clean condition for best and safest performance. DO NOT use test kit if damaged. Wear approved eye protection. A full range of personal safety equipment is available from your Sealey dealer. Wear suitable clothing to avoid snagging. Do not wear jewellery and tie back long hair.
- WARNING!** Select neutral (or "park" if automatic transmission) and keep hands clear of the engine as engine rotation may occur when using this tool. The ignition MUST BE turned off. Use proper ventilation and avoid breathing in exhaust fumes. Keep a fire extinguisher to hand.
- WARNING!** Take care when removing radiator cap as system will be under pressure and hot under pressure and hot water will be forced out.
- WARNING!** Turn regulator knob fully anti-clockwise before connecting to compressed air. Excess pressure will damage the gauge and will invalidate the warranty. Ensure you keep tester at arms length when relieving pressure to avoid personal injury. Protect your hands from burns as quick release coupling and adaptors may become hot during use. Account for all tools and parts being used and do not leave them in, or on the engine after use.

## DIESEL ENGINE COMPRESSION TEST KIT



### Diesel Engine Compression Tool Kit Master

As this kit but with the addition of it Clamp-on Injector Adaptor Set. Large, 2-1/2" ,70kg/cm<sup>2</sup> (1000psi) gauge with rubber bumper, straight and right angled quick connect fittings and an extensive range of glow plug and injector adaptors enable this kit to cover the vast majority of car, van, truck and bus, agricultural and marine diesel engines. Supplied in plastic case with pre formed liner and foam filled lid. Glow plug Adaptor: Wide range of Alfa , BMW , Chrysler , Daewoo , Fiat , Ford , Hyundai , Isuzu , LandRover , LDV , Mazda , Mercedes , Mitsubishi , Nissan , Opel , PSA , Renault , Saab , Suzuki , Toyota , VAG , Vauxhall , Volvo diesel engines  
 Injector: M20 , M22 , M24 & Ford Stanadyne injector plus clamp-on injector

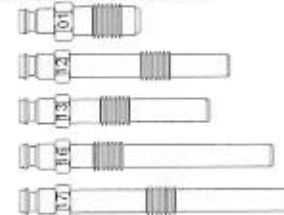
### Diesel Engine Compression Adaptor Range

The following Application Charts provide a guide to:  
 Dummy Glowplug Adaptors-vehicle/engine-Adaptor reference  
 GP Adaptor Sets-models covered by Adaptors in each Set  
 Test kits-vehicle models covered by each compression Test Kit

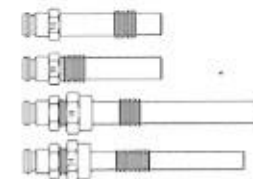
#### Adaptor Sets:

There are 6 Adaptor Sets which broadly cover the following applications...

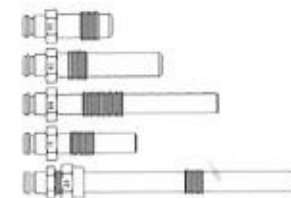
145-1 Glowplug Adaptor Set (Qty 5)-General, popular coverage including a selection from the Alfa, Mazda, PAS, BMW, Chrysler, Nissan, Fiat, Ford, Mercedes, Mitsubishi, Renault, Rover, Saab, Suzuki, VAG, Vauxhall & Volvo ranges of diesel engines



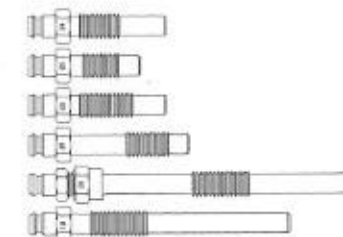
145-2 Glowplug Adaptor Set (Qty 4)-Additional coverage of Fiat, Alfa, Ford & PSA engines



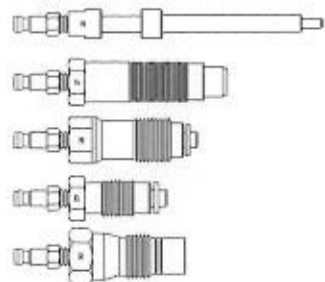
145-3 Glowplug Adaptor Set (Qty 5)-Additional coverage of LDV, Ford, Hyundai, Mazda, Mitsubishi, Toyota, Suzuki & Nissan engines



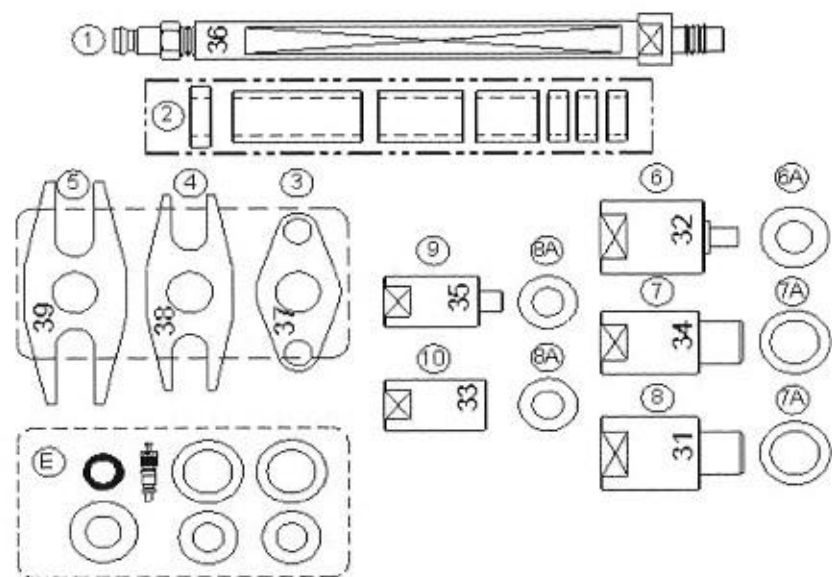
145-4 Injector Adaptor Set (Qty 6)-Popular applications for preferred injector entry M24, M22 & M20 (Nissan, Ford, PSA, Rover, Mercedes, BMW, Land, VAG, Toyota & Vauxhall engines. Also includes Stanadyne injector for Ford Transit (-00)



145-5 Glowplug Adaptor Set (Qty 5)-Additional coverage of Isuzu,Mercedes,Renault & Vauxhall engin



145B Clamp-on injector Adaptor Set-Covers slide in, clamp or claw held injectors found across all size of engine-cars to larger diesels



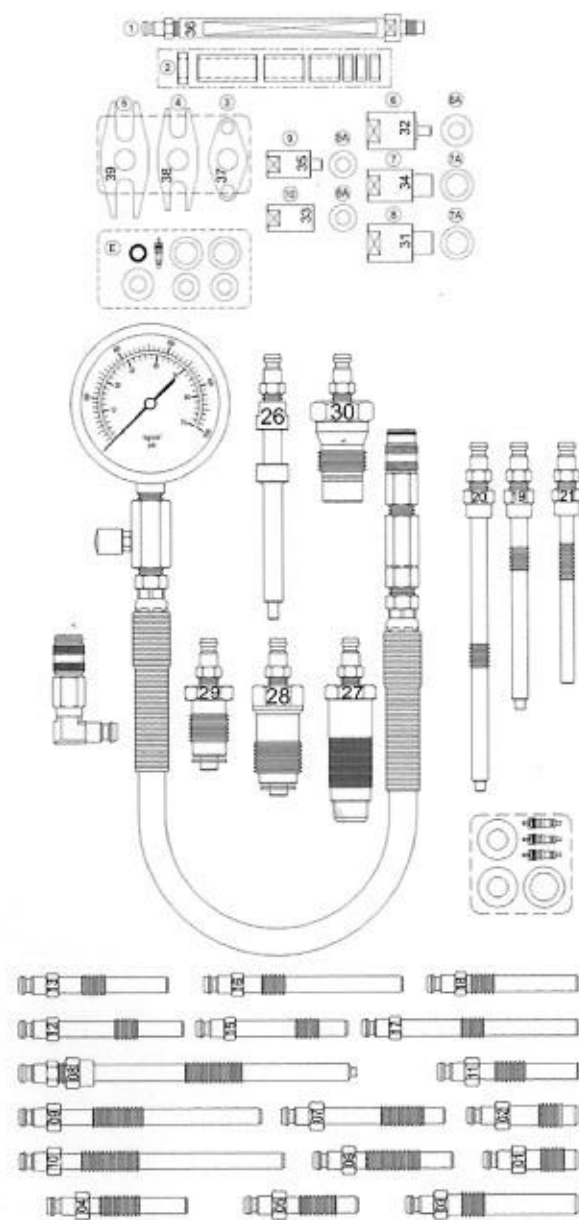
## INTRODUCTION & APPLICATIONS

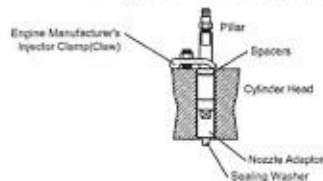
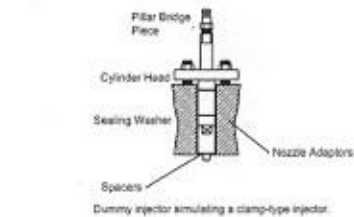
Diesel Engine Cylinder Compression testing-cars,vans,truck,agricultural and marine engines.

A modular range of Diesel Engine Compression Test Kits and a comprehensive selection of dummy glowplug and injector adaptors covering the huge range of modern diesels encountered in service workshops today.

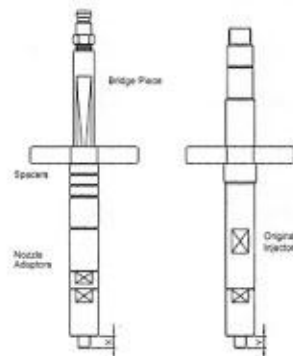
These kits offer a choice of initial levels of application coverage and the large range of adaptors then provide the opportunity of selectively increasing the application coverage, as required.

The Dummy Glowplug and Injector Adaptors are available in sets .

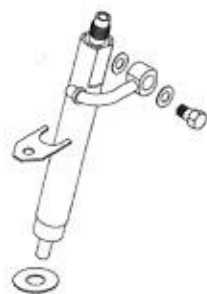




Claw held injectors - use the actual injector clamp  
**NOTE:** Use large diameter Spacer in top position for wider claws



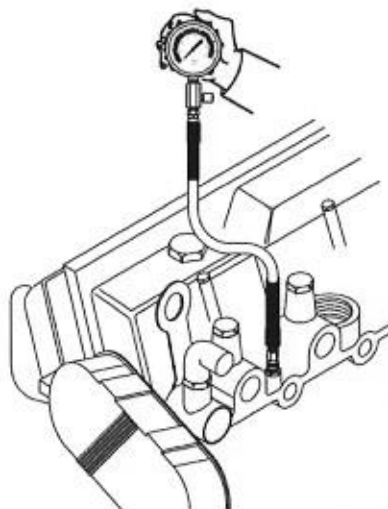
With the appropriate Nozzle Adaptor screwed to the Pillar Assembly and with Spacers and Bridge Piece added, you can duplicate the profile of the original injector. **IMPORTANT:** Depth "X" not to exceed depth "Y"



Claw type retaining clamp



Clamp type injector



## Application:

Alfa, BMW, Chrysler, Daewoo, Fiat, Ford, Hyundai, Isuzu, Land Rover, LDV, Mazda, Mercedes, Mitsubishi, Nissan Opel, PSA, Renault, Saab, Suzuki, Toyota VAG, Vauxhall, Volvo.. diesel engines.  
 Injector: M20, M22, M24 & Ford Stanadyne injector plus clamp-on injector.



### SAFETY INSTRUCTIONS

- WARNING!** Ensure all Health and Safety, local authority, and general workshop practice regulations are strictly adhered to when using product. Compression tests on diesel engines should be conducted when the engine is cold.
- Use proper ventilation and avoid breathing in exhaust fumes. Keep a fire extinguisher to hand. Fuel delivery must be prevented by either operating the engine stop lever or disconnecting fuel pump solenoid. Ensure you keep tester at arms length when relieving pressure to avoid personal injury. Protect your hands from burns as quick release coupling and adaptors may become hot during use. Account for all tools and parts being used and do not leave them in, on or near the engine after use. **DO NOT** remove the compression test equipment while engine is being cranked.
- Maintain tools in good and clean condition for best and safest performance. **DO NOT** use test kit if damaged. Wear approved eye protection. A full range of personal safety equipment is available from your Sealey dealer. Wear suitable clothing to avoid snagging. Do not wear jewellery and tie back long hair.